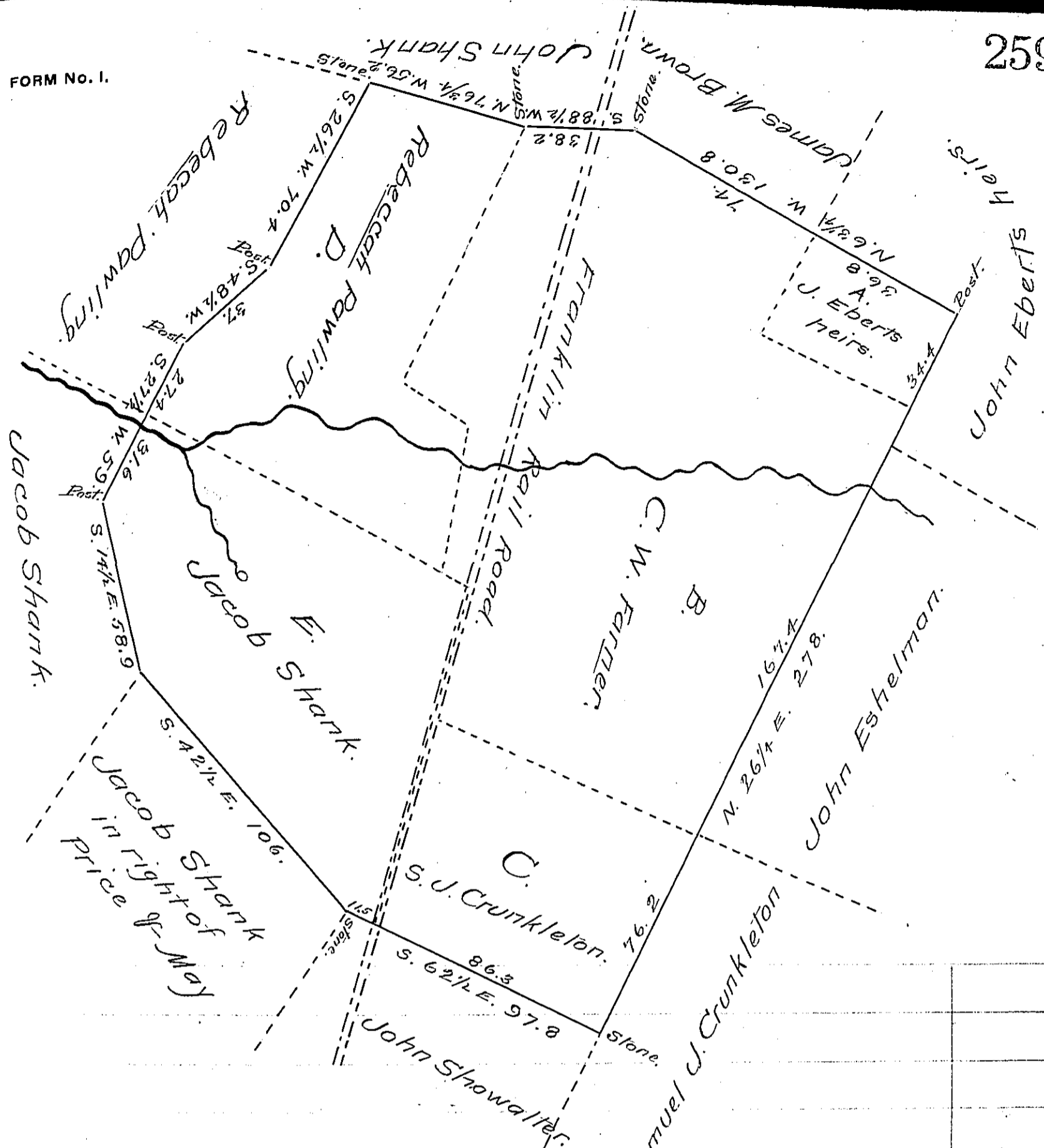


FORM No. 1.



*Draught of a tract of Land Situate in Antrim Township Franklin County Pa. Containing three hundred and thirty eight acres and and forty Six perches and allowance of Six per cent for Roads &c. Surveyed March 2<sup>d</sup>. 1863. for the owners and occupiers in pursuance of a Warrant granted to Conrad Price & W<sup>m</sup>. May dated June 12<sup>th</sup>. 1745. A. owned and occupied by John Eberts heirs. B owned and occupied by Charles W. Farmer, C. owned and occupied by Samuel J. Crunkleton D. owned and occupied by Rebecca Pawling, and E. owned and occupied by Jacob Shank.*

*To Henry Souther Esq. } Emanuel Kuhn C.S.  
Surveyor General }*

*IN TESTIMONY that the above is a copy of the original remaining on file in the Department of Internal Affairs of Pennsylvania, made conformably to an Act of Assembly approved the 16th day of February, 1833, I have hereunto set my Hand and caused the Seal of said Department to be affixed at Harrisburg, this Twelfth day of July 1906.*

*Grace B. Brown  
Secretary of Internal Affairs.*